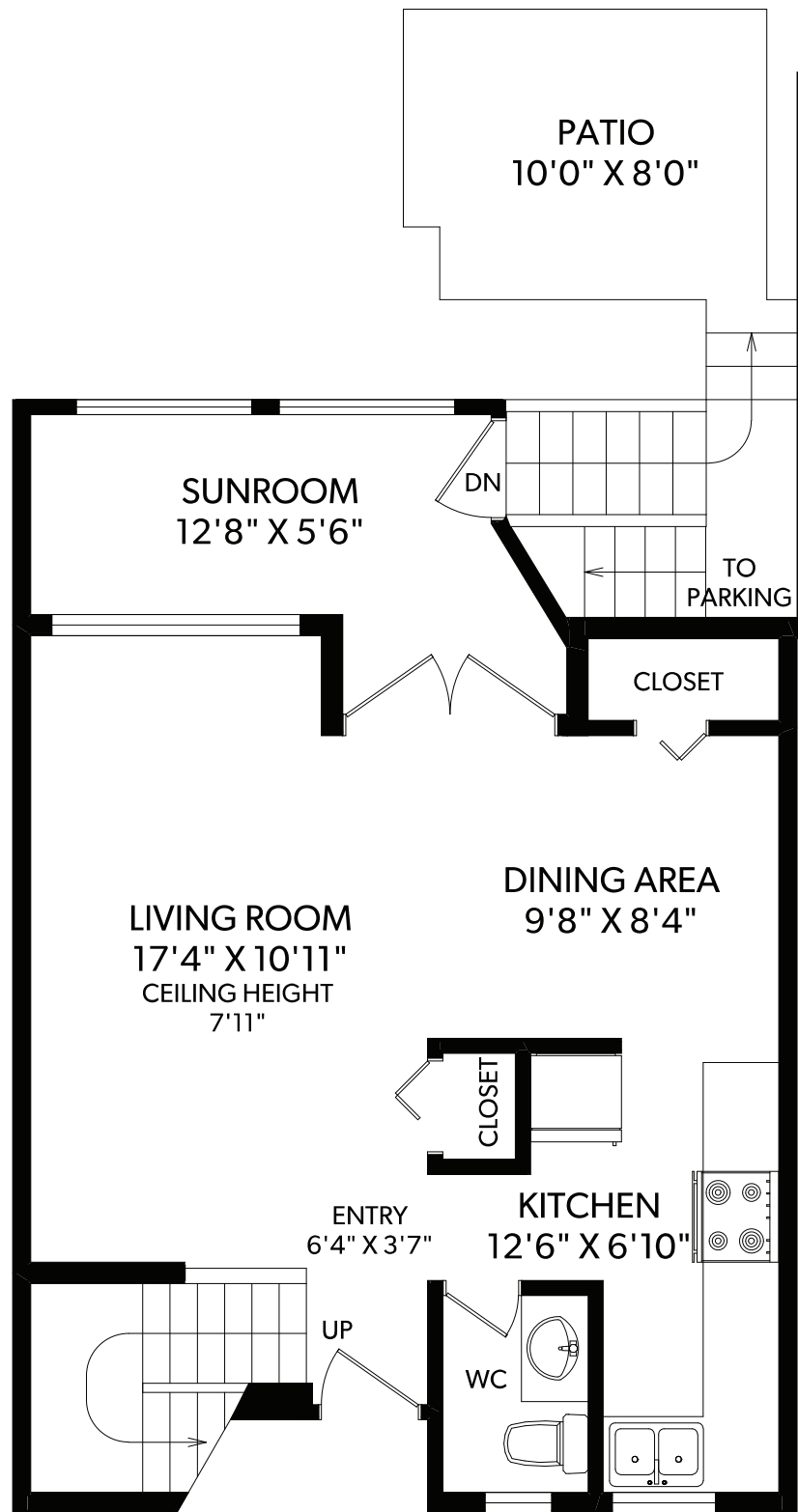
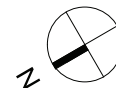
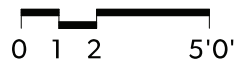


MAIN FLOOR



FLOOR	FINISHED	UNFINISHED	TOTAL
MAIN	587	0	587
UPPER	518	0	518
TOTAL	1105	0	1105

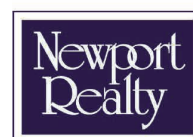
OTHER AREAS	
PATIO	78
BALCONY	47



6-245 ONTARIO STREET

DOCUMENT PREPARED FOR THE EXCLUSIVE USE OF

GORDON LEE



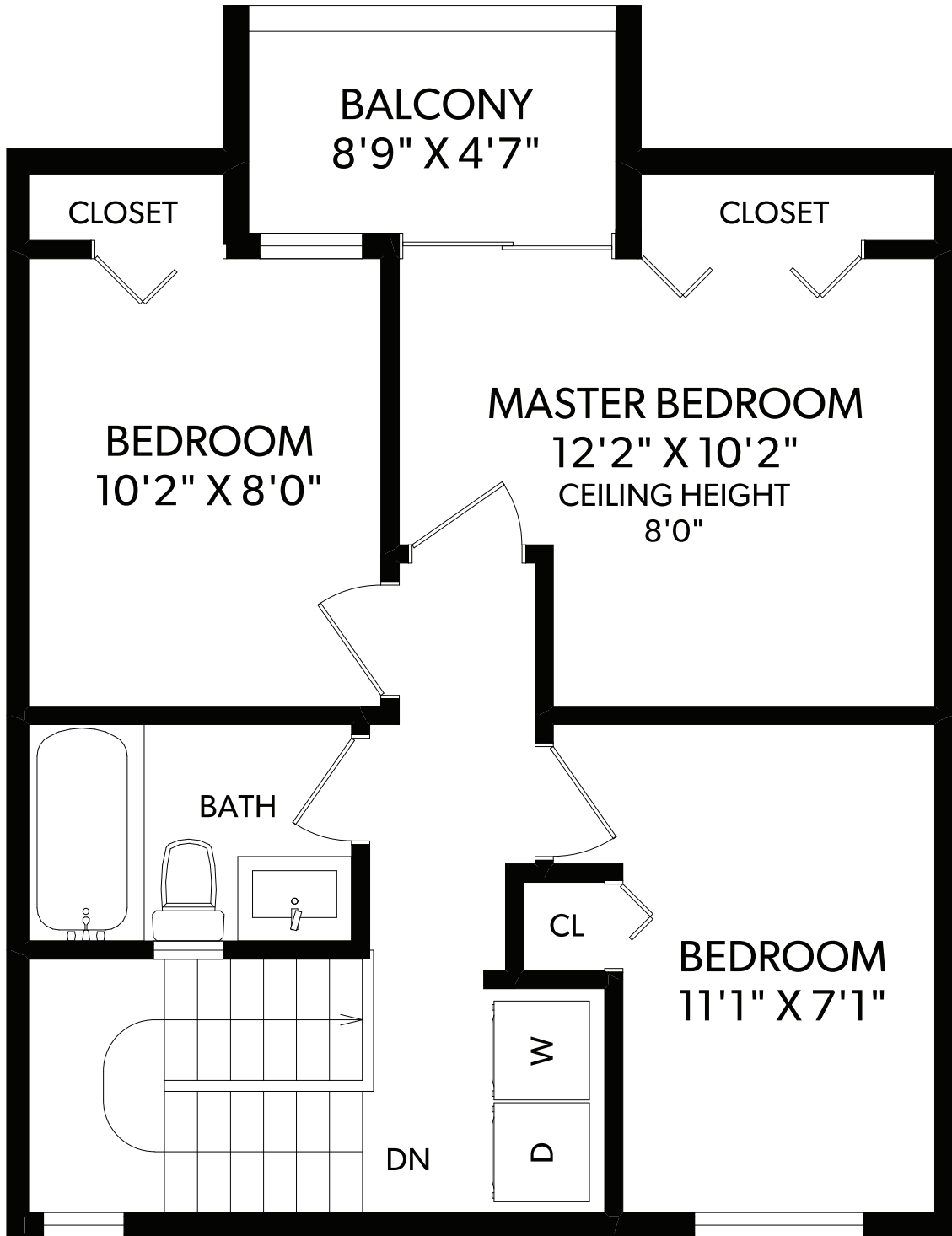
CHRISTIE'S
INTERNATIONAL REAL ESTATE

250-388-6998
ORDERS@REALFOTO.CA

MEASURED 03/14/2019 BY TODD MAYER

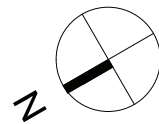
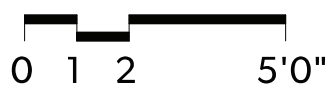
All information furnished regarding this property is from sources deemed reliable but no warranty or representation is made to the accuracy thereof. Purchaser to verify measurements if important.

UPPER FLOOR



FLOOR	FINISHED	UNFINISHED	TOTAL
MAIN	587	0	587
UPPER	518	0	518
TOTAL	1105	0	1105

OTHER AREAS	
PATIO	78
BALCONY	47



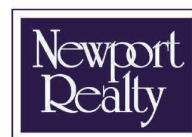
6-245 ONTARIO STREET

DOCUMENT PREPARED FOR THE EXCLUSIVE USE OF

GORDON LEE

250-388-6998
ORDERS@REALFOTO.CA

MEASURED 03/14/2019 BY TODD MAYER



CHRISTIE'S
INTERNATIONAL REAL ESTATE

All information furnished regarding this property is from sources deemed reliable but no warranty or representation is made to the accuracy thereof. Purchaser to verify measurements if important.